



# SKYLO

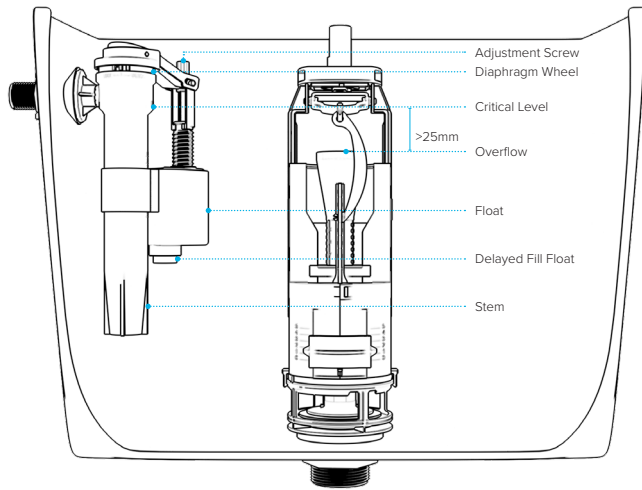
## SIDE ENTRY FILL VALVE



### WARNING

We shall not be responsible or liable for any failure of, or damage to, this plumbing product caused by the use of chlorine/bleach cleaners or related products added to the tank water. Use of such products will void the warranty and may result in product failure, possibly causing property damage. Do not over tighten plastic nuts and always turn off water supply when installing / removing toilet cistern parts.

**IMPORTANT:** Some water companies may require a check valve to be installed before a fill valve. We take no responsibility for any failure to comply with installation requirements.



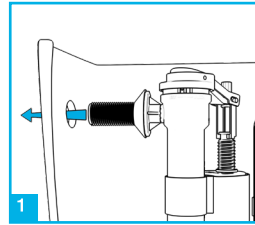
**Please note: Save this instruction sheet for future reference**  
**IMPORTANT: DO NOT use plumber's putty to seal this fitting**

For more information please contact:

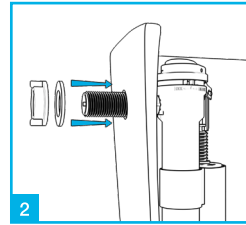
**VIVA Sanitary**  
Units 1-2 Capitol Trading Park, Kirkby Bank Road  
Knowsley Industrial Estate, Liverpool, L33 7SY

Tel: 0151 546 0531 Fax: 0151 549 4187  
E-mail: sales@vivasanitary.co.uk

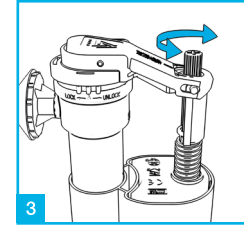
## INSTALLATION INSTRUCTIONS



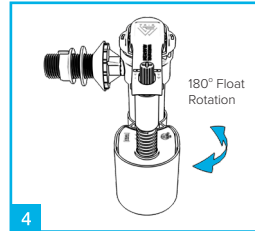
Place the valve in the correct position inside the cistern ensuring the conical rubber seal sits evenly inside the hole.



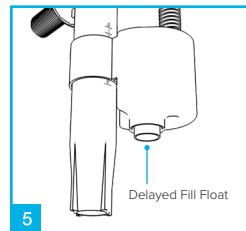
Secure the valve to the cistern using the plastic washer and nut. Do not over tighten.



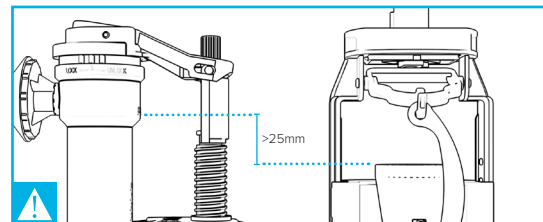
The water level can be adjusted by turning the adjustment screw (clockwise for more water, anticlockwise for less water).



The valve has a float rotation system, allowing the float to be rotated 180°. This is really beneficial if space is an issue.

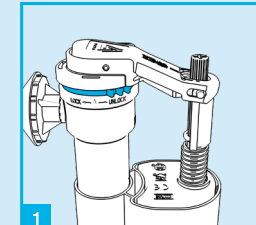


The valve comes with a delayed fill function which delays the filling of the cistern until 5 seconds (approx.) after the start of a flush.

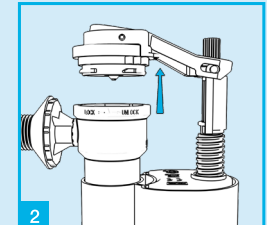


For the prevention of backflow from the cistern you must ensure the critical level of the fill valve is no less than 25mm higher than the cistern overflow level.

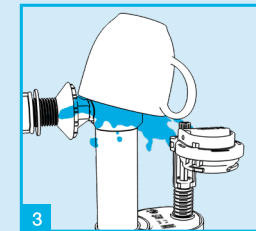
## TROUBLESHOOTING



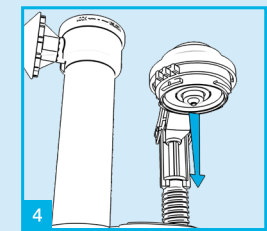
Turn off the water supply and set access wheel to unlock.



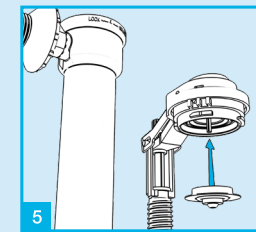
Lift the top assembly away from the valve holding the arm.



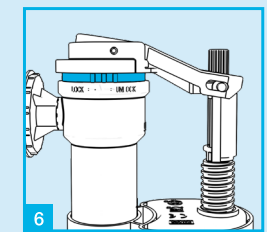
Turn the water supply on and off to clear any debris. Hold a cup over the top to prevent any splashing.



Remove diaphragm washer and clean with water or replace.



Re-insert diaphragm washer.



Refit top assembly complete with diaphragm and turn on water supply.

**PRO**<sup>+</sup>  
INSTALLERS CLUB

Join the Pro+ Installers club for exclusive benefits.  
[www.vivasanitary.co.uk/pro](http://www.vivasanitary.co.uk/pro)



Scan QR code for installation video