



Applications

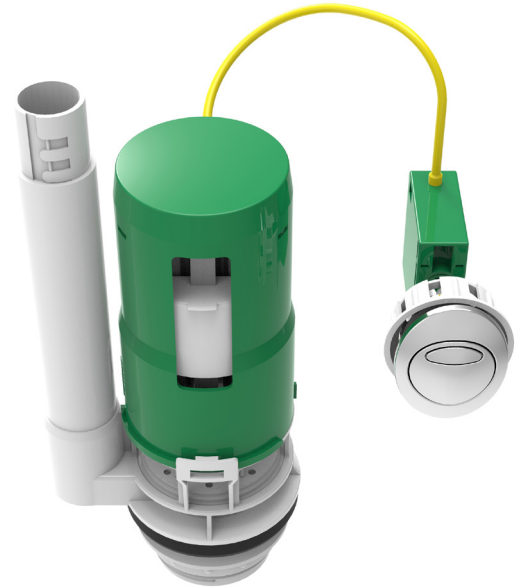
Ideal for use as a replacement in concealed cable operated cisterns typically mounted behind panelling or within furniture units. Also compatible with exposed and close coupled cisterns.

Water Saving

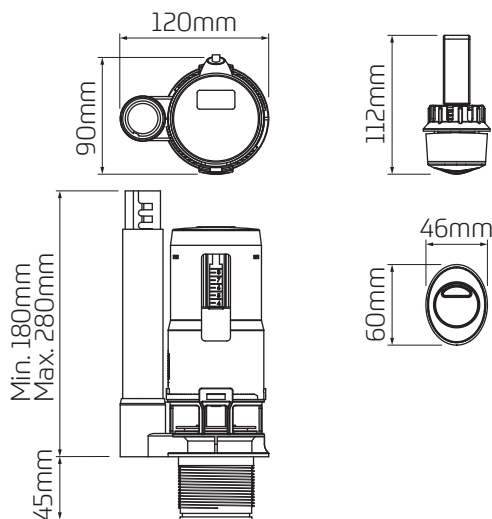
~ 6/4 litre dual flush.

Features

- ~ Suitable for 48mm (1½" BSP) and 60mm (2" BSP) outlets utilising supplied 2" adaptor
- ~ Chrome plated dual flush push button - Can replace a traditional flush lever in some furniture and close coupled installations.
- ~ Bayonet fitting enables valve body to be quickly and easily removed from the cistern
- ~ Easy adjustment
- ~ WRAS approved.



Dimensional Data



Technical Data

Outlet	1½" BSP (48mm), 2" BSP (60mm)
Flush Volume	6/4 Litre Dual Flush
Cable Length	300mm (470mm Cable option available)
Cistern Type	Low Level Exposed, Close Coupled, Concealed (Cable operated)